



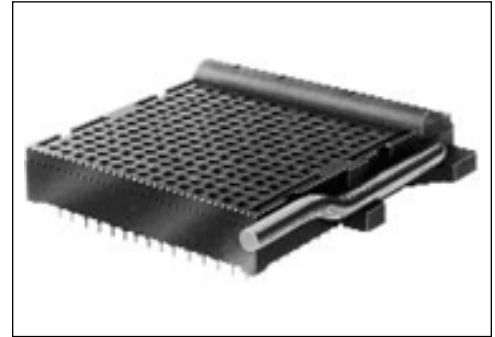
# Zero Insertion Force PGA Test & Burn-in Sockets

## FEATURES

- A strong, metal cam activates the normally closed contacts, preventing dependency on plastic for contact force.
- The handle can be provided on right or left hand side.
- Consult factory for special handle requirements.

## SPECIFICATIONS

- Socket body is black UL 94V-0 Polyphenylene Sulfide (PPS).
- Contacts are either Beryllium-Copper Alloy 174, 1/2 hard or Spinodal Alloy.
- Plating options for Beryllium-Copper contact: "2" 30µ [0.76µm] min. Gold per MIL-G-45204 on contact area, 200µ [5.08µm] min. Matte Tin per ASTM B545-97 on solder tail, both over 30µ [0.76µm] min. Nickel per QQ-N-290 all over. Consult factory for plating options not shown.
- Plating for Spinodal Alloy contact only: "6": 50µ [1.27µm] min. Nickel Boron.
- Handle is Stainless Steel.
- Contact current rating: 1 amp
- Operating temperatures: -85°F to 257°F [-65°C to 125°C] Gold plating, -85°F to 392°F [-65°C to 200°C] Nickel plated Spinodal.
- Accepts leads 0.014-0.026 [0.36-0.66] in diameter, 0.120-0.290 [3.05-7.37] long.



NOTE: Aries specializes in custom design and production. In addition to the standard products shown on this page, special materials, platings, sizes, and configurations can be furnished, depending on quantities. Aries reserves the right to change product specifications without notice.

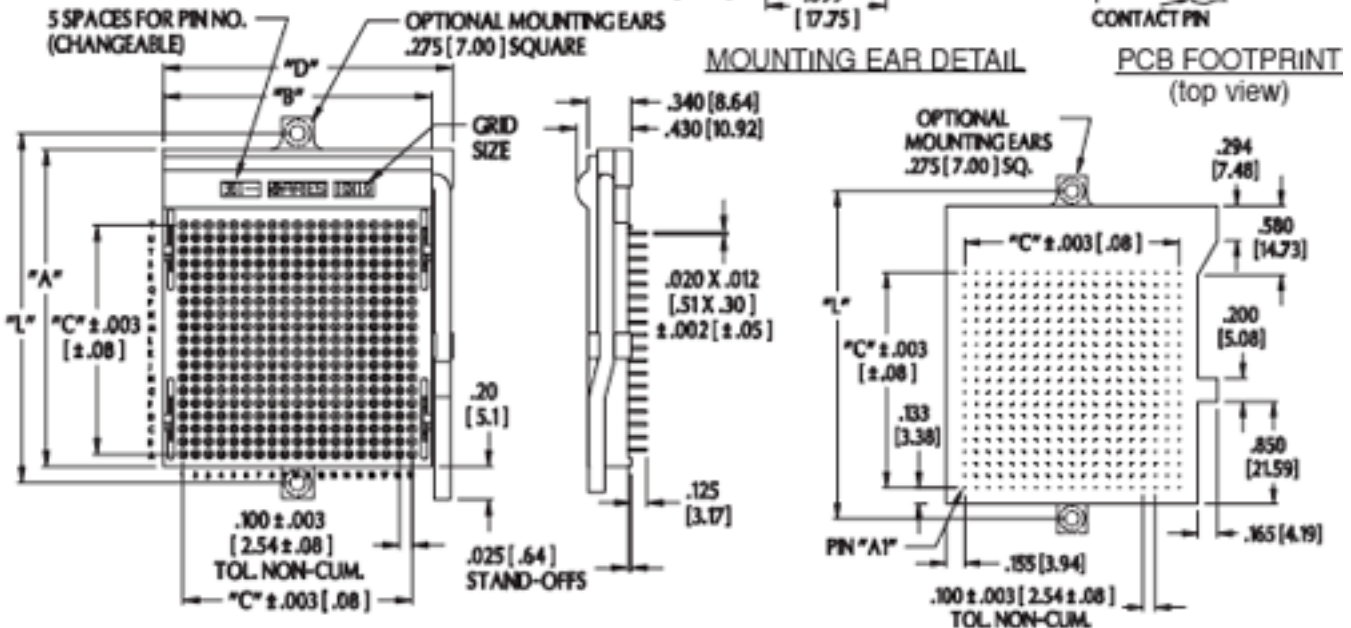
See Data Sheet  
No. 10005 for  
additional information

## MOUNTING CONSIDERATIONS:

- Suggested PCB hole size: 0.032 ±0.002 [0.81 ±0.05] dia.
- See PCB footprint below.
- Plugs into standard PGA sockets.

All tolerances ± .005 [.13]  
unless otherwise specified

ALL DIMENSIONS: INCHES [MILLIMETERS]



Bristol, PA 19007-6810 USA  
TEL (215) 781-9956 • FAX (215) 781-9845  
WWW.ARIESELEC.COM • INFO@ARIESELEC.COM

